

# LIQUID LEVEL SWITCH

Noryl® (PPO) and Fortron® (PPS) Engineering Plastic  
Available with Optional Filter Boot

## For Use in Highly Particle Contaminated Liquids:

Sewage, waste water, contaminated ground water, Machine cutting oils, medium slurries

## Corrosive Liquids such as:

Acids and bases, sea water, rusty coolant water, various chemicals (see page 49).

## Special Features

- Particle contamination resistance is provided by a single convolute elastomeric flexible seal which is continuously flushed by the working fluid.
- Models for vertical or horizontal mounting.
- Maintenance and checkout is a snap for your present personnel using an uncomplicated standard test meter.
- Optional Nitrophenyl® (Nitrile) Closed Cell Float for mounting switch in 1" NPT fitting.

## Features

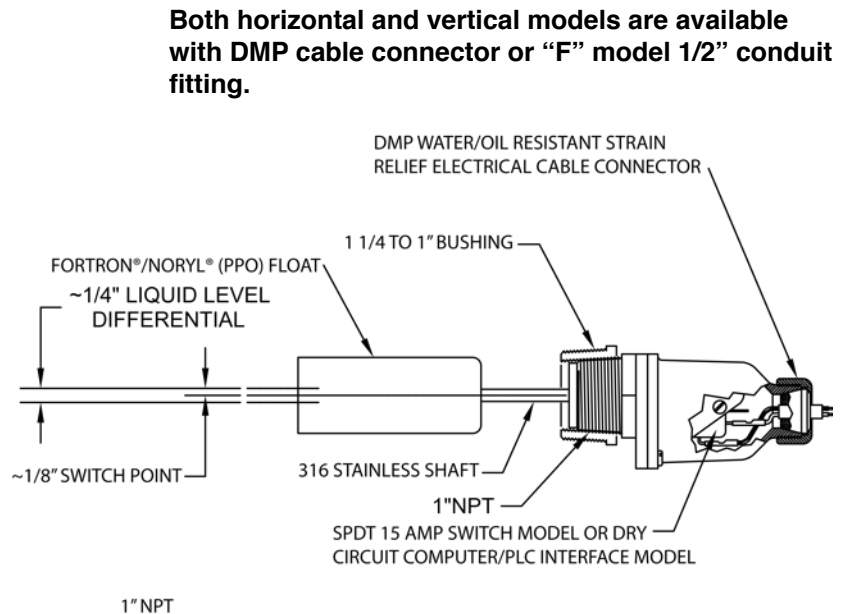
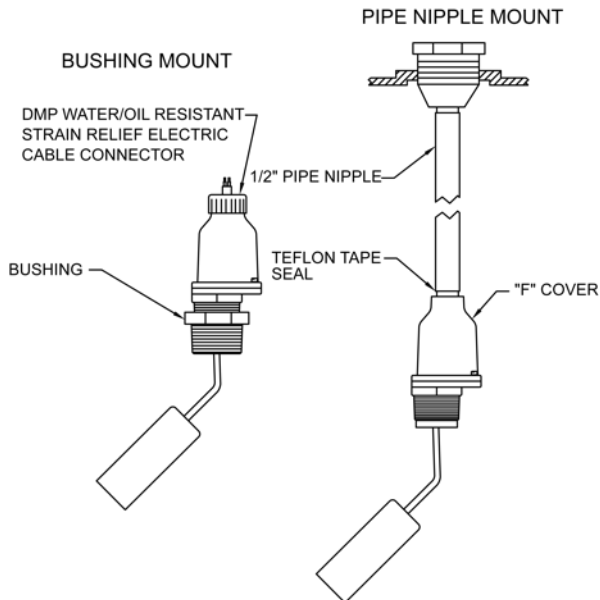
- Wetted surfaces of Fortron® (PPS), Noryl® (PPO), 316 stainless steel, EPDM or Viton® (Hypalon® optional)
- SPDT 15 amp, 120/240 VAC, switching capacity model or Gold Cross Dry Circuit Computer/PLC Interface Model.
- Intrinsically Safe Relay allows Model L-30 to be used in hazardous areas.
- Temperatures to 200°F continuous.
- Pressures to 75 psig operating
- Pressures to 100 psig non-operating.

## For

- High/Low Liquid level alarm
- Liquid level indication
- Pump Up/ Pump Down Control
- Solenoid Valve control

Fortron® and Noryl® test strips are available for testing in your particular chemical environment

Extensive Chemical Corrosive List Available



# Model L-30N (PPO) & L-30R (PPS)

COMPONENT RECOGNIZED /c (E85349)



**HORIZONTAL MODEL  
L-30N OR L-30R**



**VERTICAL MODEL  
L-30NV OR L-30RV**



Limited Warranty Page 7

# Model L-30N (NORYL®) & L-30R (Fortron®)

## Specifications

### Model L-30N (Noryl® PPO)

For use in water, acids, bases, inorganic solutions, sewage, contaminated water

### Wetted Surfaces

Noryl® Engineering Plastic (PPO), 316 Stainless Steel, EPDM (Viton® optional)

### Nominal Working Temperature & Pressure

Temperature (°F) 180 Max  
 Pressure (psig) 75 Operating  
 100 Max Non-operating

### L-30R (Fortron® PPS) (Broad Chemical Spectrum)

For use in acids, bases, inorganic solutions, alcohols, ketones, chlorinated organics, esters, ether, hydrocarbons, nitrites, phenols.

### Wetted Surfaces

Fortron® Engineering Plastic (PPS), 316 stainless steel, Viton®

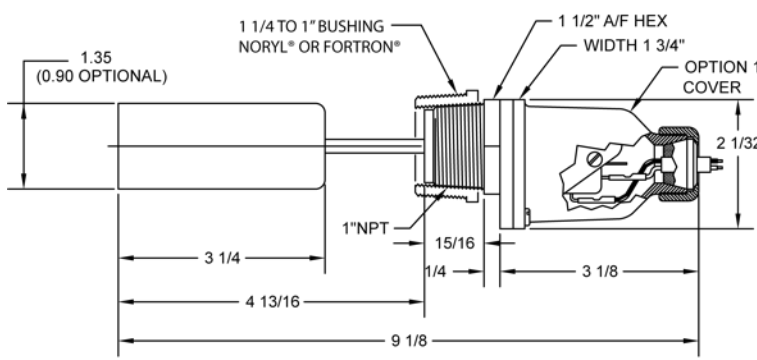
### Nominal working temperature & pressure

Temperature (°F) 200 Max  
 Pressure (Psig) 75 Operating  
 100 Max Non-operating

### Optional filter boot available in EPDM

(Viton® Special Order)

## Installation Dimensions



## Input Power Cable Interface Options

### Option No. 1

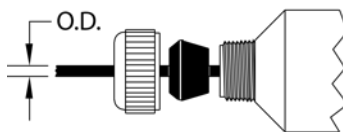
Sample Part #

Basic Model # & Body Material

Grommet Size

L - 30N / A  
 L - 30RV / AA

Horizontal or Vertical Mount



Grommet Size	Cable OD	Grommet Size	Cable OD
A	0.25"	B	0.37"
AA	0.30"	C	0.50"

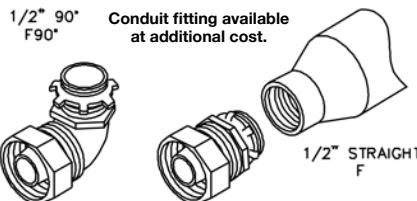
### Option No. 2

Sample Part #

Basic Model # & Body Material

1/2" NPT Female Thread

L - 30NV / F  
 L - 30R / F



## Specifications for Models L-30N & L-30R

### Working Fluid Spec. Gravity - 0.8 min.

### Electrical Switch Characteristics

SPDT UL and CSA listed  
 15 AMP @ 1/2 HP; 125/250 VAC  
 1/2 AMP @ 125 VDC, 1/4 AMP @ 250 VDC  
 5 AMP 125 VAC (Tungsten lamp load)  
 10,000,000 operations median.

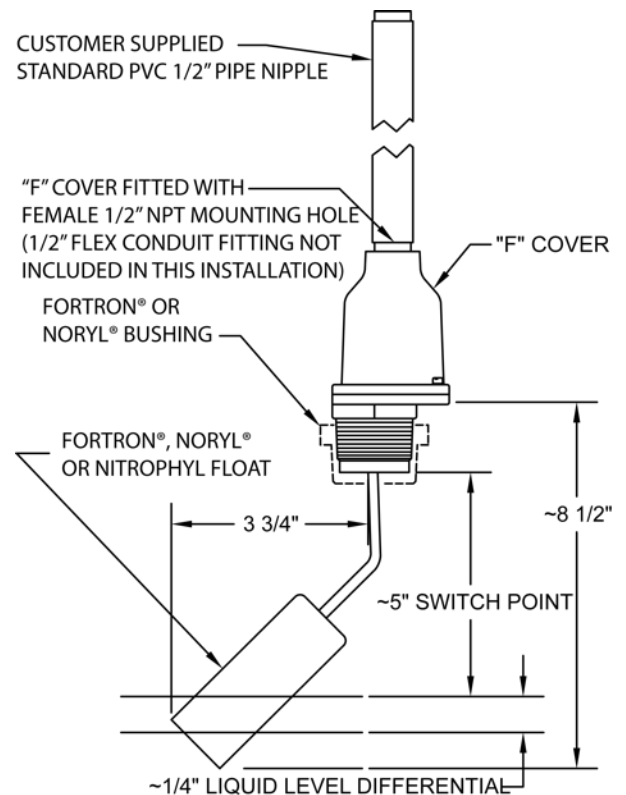
### SPDT-Dry Circuit

Gold Cross Bar Contacts for Computer/PLC Interface  
 0.1 AMP or less 5-24 VAC/DC (UL & CSA listed)

### Liquid Level Change to Activate Switch

≈ 1/4" all models

### Weight: 1/2 lb



- Installation drawing and a numbered parts list is supplied with each unit.
- Current Price Information is Listed on Separate Sheet.
- Special One Day Delivery Available.