

# LIQUID LEVEL SWITCH

# Model L-30CR

Fortron® (PPS) Engineering Plastic  
Available with Optional Filter Boot

COMPONENT RECOGNIZED  /c  (E85349)

For Use in Highly Particle Contaminated Liquids:

- Contaminated groundwater
- Machine cutting oils
- Medium slurries
- Sewage
- Waste water

Broad Spectrum Corrosive Liquids such as:

- Acetic acid
- Acid & base solutions
- Acid mine water
- Aqueous Ammonia
- Benzene
- Crude Oil
- Ferric Chloride
- Paper pulp liquor

Special Features:

- Corrosion resistance is provided by the wetted surface combination of Fortron® (PPS), Hastelloy® C (Titanium, Tantalum special order) and Viton®.
- Particle contamination resistance is provided by a single convolute elastomeric flexible seal which is continuously flushed by working fluid.
- SPDT 15 amp switching capacity model or Dry Circuit Computer/PLC interface model.
- Intrinsically Safe Relay allows Model L-30CR to be used in hazardous areas.
- Temperatures to 200°F continuous.
- Pressures to 75 psig operating
- Pressures to 100 psig non-operating.
- Maintenance and checkout is a snap for your present personnel using an uncomplicated standard test meter.

For -

- High/Low Liquid level alarm
- Pump Up/ Pump Down Control
- Liquid level indication
- Solenoid Valve control
- Fortron® PPS test strips are available for testing in your particular chemical environment.
- Extensive Chemical Corrosive List Available

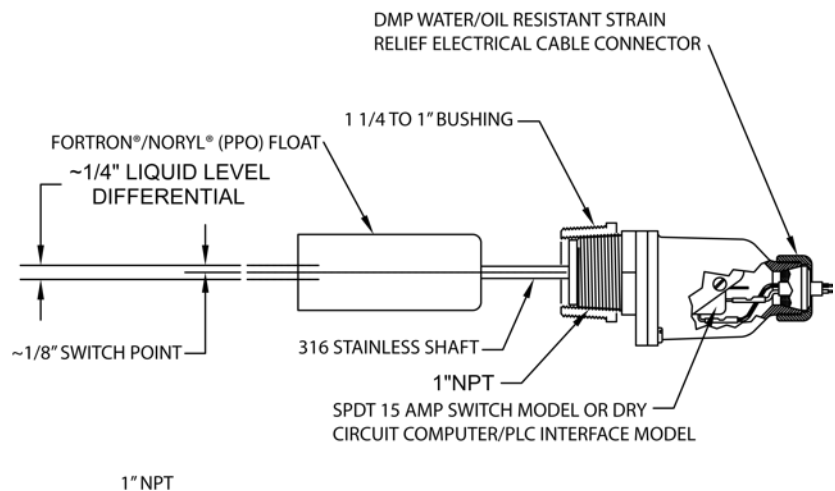
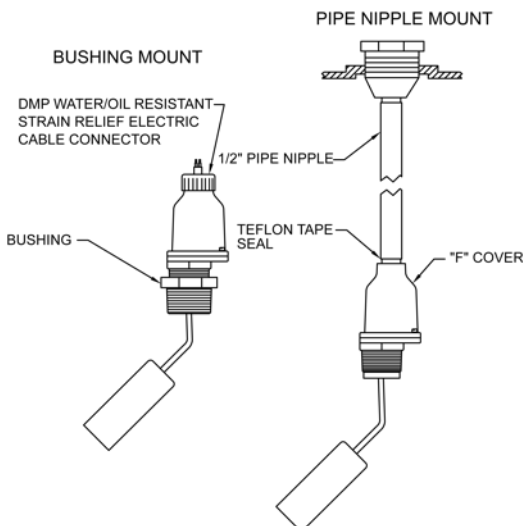


**HORIZONTAL MODEL  
L-30CR**



**VERTICAL MODEL  
L-30CRV**

Both horizontal and vertical models are available with DMP cable connector or "F" model 1/2" conduit fitting.



Limited Warranty Page 7

541 Kinetic Drive, Oxnard, CA 93030  
Tel: (805) 988-6800 Fax: (805) 988-6804  
Email: harwil@harwil.com

# Model L-30CR

## Specifications

### Model L-30CR

#### Float and Body

Fortron® PPS

#### Wetted Surfaces

Fortron® PPS/Viton®/Hastelloy® C/Standard (Titanium/Tantalum special order)

#### Corrosion Resistance

Determined by wetted surfaces listed above.  
An extensive chemical corrosive list is available (see page 49)

#### Nominal Working Temperature & Pressure

Temperature (°F) 200 Max  
Pressure (Psig) 100 Max

#### Working Fluid Spec. Gravity

0.7 min.

Weight: 1/2 lb.

#### Electrical Switch Characteristics

SPDT UL and CSA listed  
15 AMP, 1/2 HP @ 125 or 250 VAC  
1/2 AMP @ 125 VDC, 1/4 AMP @ 250 VDC  
5 AMP @ 125 VAC (Tungsten lamp load)  
10,000,000 operations median.

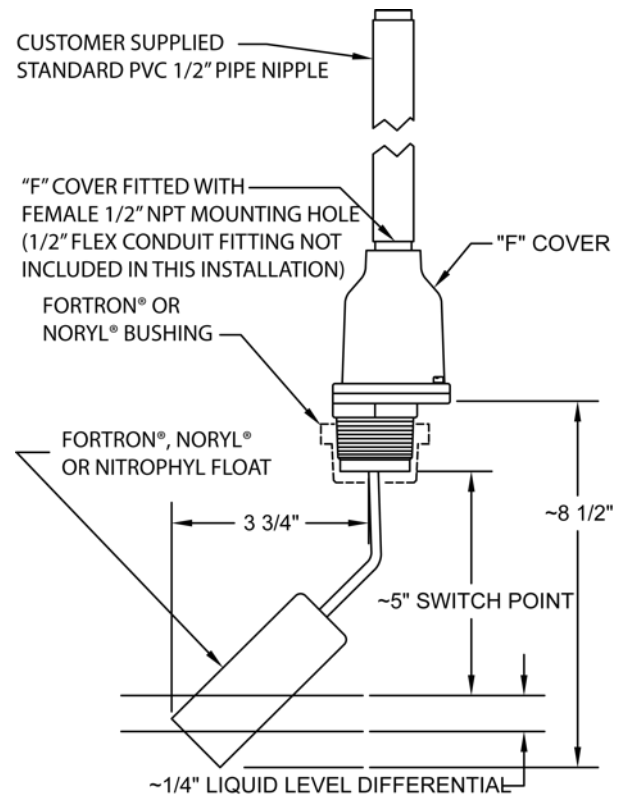
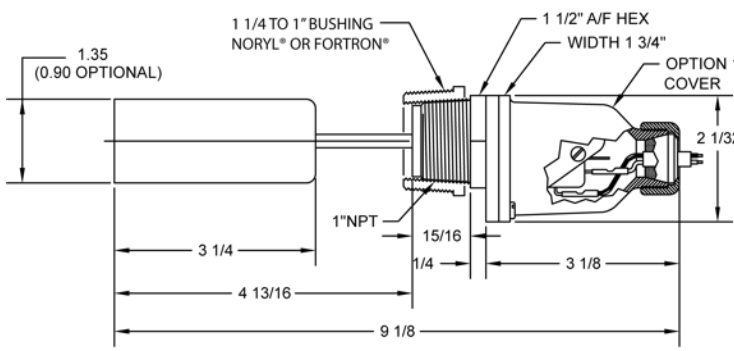
#### SPDT-Dry Circuit UL & CSA Listed

Gold Cross Bar Contacts for Computer/PLC Interface  
0.1 AMP or less 5-24 VAC/DC

#### Liquid Level Change to Activate Switch

≈ 1/4"

## Installation Dimensions



## Input Power Cable Interface Options

### Option No. 1

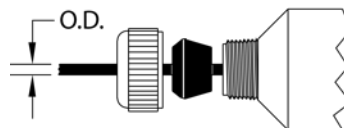
Sample Part #

Basic Model #

Grommet Size

**L - 30CR / A**

Body Material Fortron® (PPS)



Grommet Size	Cable OD	Grommet Size	Cable OD
A	0.25"	B	0.37"
AA	0.30"	C	0.50"

### Option No. 2

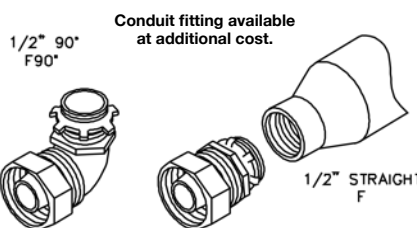
Sample Part #

Basic Model #

1/2" NPT Female Thread

**L - 30CR / F**

Body Material Fortron® (PPS)



- Installation drawing and a numbered parts list is supplied with each unit.
- Current Price Information is Listed on Separate Sheet.
- Special One Day Delivery Available.