

LIQUID LEVEL SWITCH

Model L-8N, L-8R & L-8CR

Fortron® (PPS) and Noryl® (PPO)

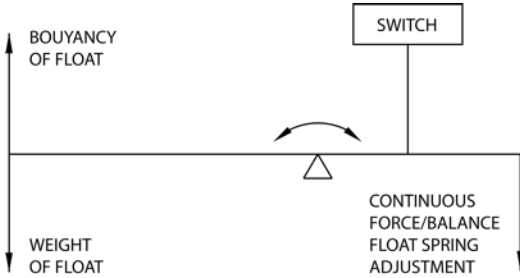
Specific Gravity Compensating

COMPONENT RECOGNIZED  /c  (E85349)

Available with Optional Filter Boot For Use in Highly Particle Contaminated Liquids

- Featuring continuously adjustable float buoyancy control to allow use in fluids with specific gravity down to 0.6
- Continuous buoyancy control allows switch activation at oil/water interface.

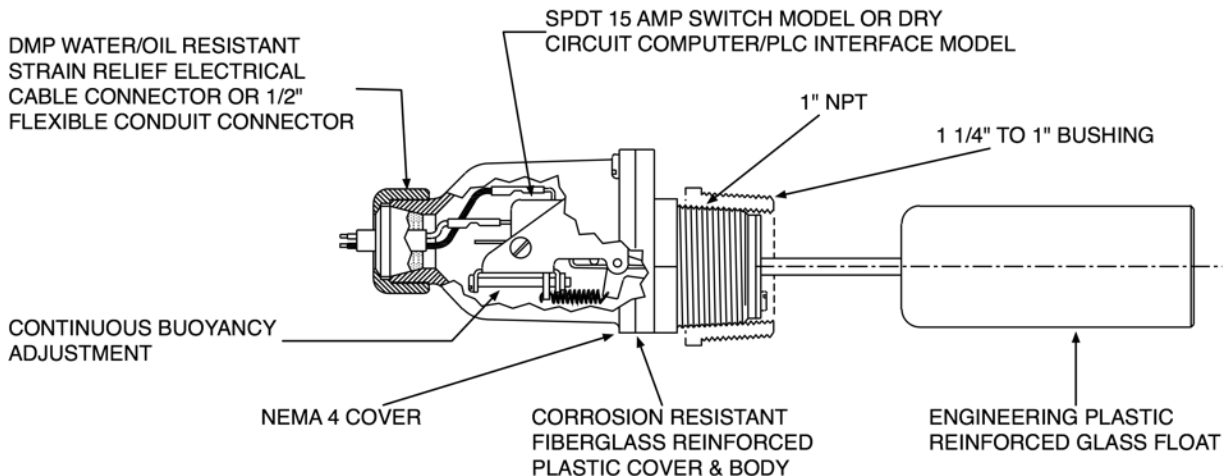
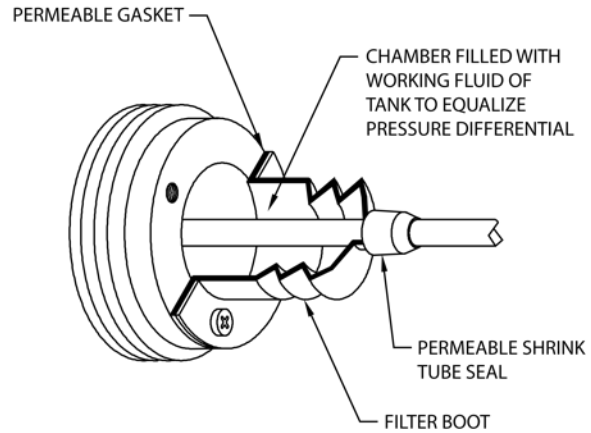
- Consult factory for other bicomponent fluid interface systems.



Typical Working Fluids

- Water/Oil Interface switch point
- Foam/Fluid interface switch point
- Wetted surfaces of various combinations of 316 stainless, Hastelloy® C, Teflon®, Fortron® (PPS), Noryl® (PPO), Viton®, EPDM optional and PVC for use in liquids from water, sea water, etc., to low, medium and concentrated acids and bases.
- May be used in hazardous areas when used with intrinsically safe relays.
- 15 amp, 120 or 230 VAC, SPDT switch action
- Gold Cross Bar Dry Circuit Computer/PLC Interface SPDT Switch Model also available.
- Horizontal Mount only
- Temperature to 180°F
- Pressure to 75 psig operating
- Pressure to 100 psig non-operating
- Solenoid valve control
- Liquid level alarm
- Liquid level indication
- Direct pump control
- Extensive Chemical Corrosive List (see page 49)
- Maintenance and checkout is a snap for your present personnel using an uncomplicated standard test meter

- Alcohols
- Chemical Solutions
- Contaminated Groundwater
- Glycols
- Machine Cutting Oils
- Oils
- Pure Water
- Rusty Coolant Water, Etc.
- Sewage
- Sewage Water
- Soap Solutions
- Tap Water



Limited Warranty Page 7

Specifications

(Same for all models except where shown)

Model L-8N

Noryl® body, float and bushing, EPDM diaphragm, 316 stainless float shaft and screws (Viton® optional)

For

Mild acids and bases, inorganics, some alcohols, water.

Model L-8R

Fortron® (PPS) body, float and bushing, Viton® diaphragm, 316 stainless float shaft and screws.

For

Medium acids and bases, inorganics, alcohols, most hydrocarbons.

Model L-8CR

Fortron® (PPS) body, float and bushing, Viton® diaphragm, Hastelloy® C float shaft and Teflon screws.

For

Concentrated acids and bases, inorganics, alcohols, hydrocarbons, chlorinated organics, phenols.

Model L-8N, L-8R & L-8CR

Electrical Switch Characteristics

SPDT UL and CSA listed
 15 AMP, 1/2 HP @ 125 or 250 VAC
 1/2 AMP @ 125 VDC, 1/4 AMP @ 250 VDC
 5 AMP @ 125 VAC (Tungsten lamp load)
 10,000,000 mechanical operations median

Working Fluid Specific Gravity Range - Adjustable between 0.6 and 1.5 & up

Nominal Working Temperature / Pressure

180°F max. @ 75 psig

Liquid Level Change to Activate Switch

≈ 1/4" max. travel

Weight

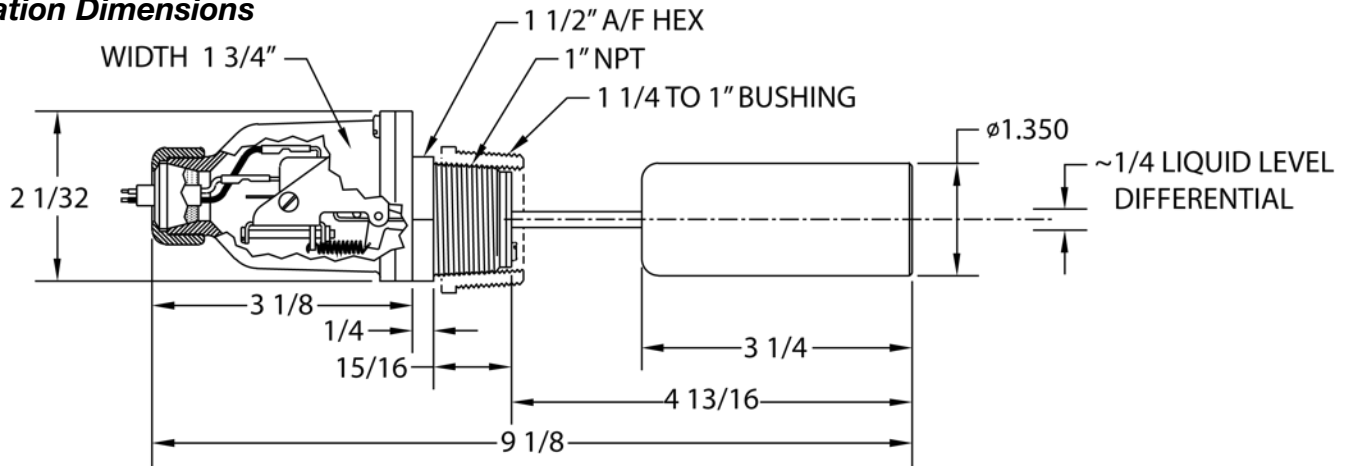
1/2 lb.

SPDT - Dry Circuit UL & CSA listed

Gold Cross Bar Contacts for Computer/PLC Interface
 1.0 amps or less 5-24 VAC/DC

Optional filter boot available in EPDM (L-8N) or Viton® (L8CR)

Installation Dimensions



Input Power Cable Interface Options

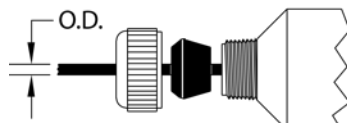
Option No. 1

Sample Part #:

Basic Model # & Body Material

Grommet Size

L - 8N / A
L - 8R / AA
L - 8CR / C



Option No. 2

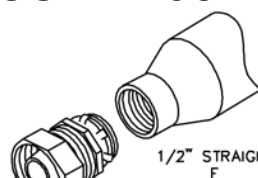
Sample Part #:

Basic Model #

Grommet Size

L - 8N / F
L - 8R / F
L - 8CR / F90°

1/2" 90° F90°



1/2" STRAIGHT F

Conduit fitting available at additional cost.

Grommet Size	Cable OD	Grommet Size	Cable OD
A	0.25"	B	0.37"
AA	0.30"	C	0.50"

- Installation drawing and a numbered parts list is supplied with each unit.
- Current Price Information is Listed on Separate Sheet.
- Special One Day Delivery Available.