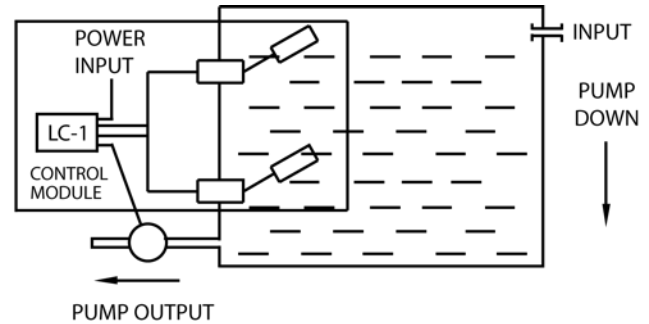
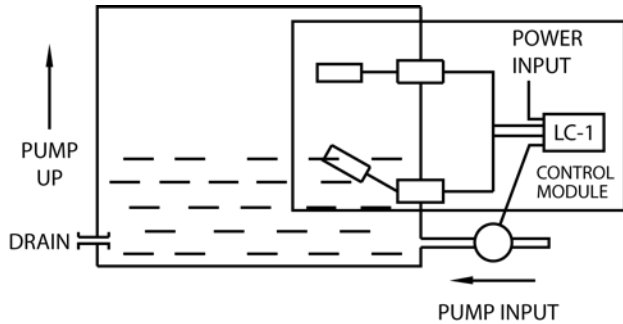


PUMP UP/PUMP DOWN LIQUID LEVEL CONTROL

Model LC-1 Module

The combination of any two Harwil liquid level switches and an electronic control module mounted in a weather-resistant box provide a ready-to-go system for the automatic filling or emptying of tanks or vessels.



System is composed of:

- Electronic Latching/Unlatching Control Module
- Special electronic module design eliminates false starts due to turbulent wave action.
- Nema 4 weather resistant box with two standard 1/2" seal tight flexible conduit fittings.
- A secondary 10 amp SPDT relay output is also provided.
- Color coded w/ ring and labeled terminal strip.
- 120 or 240 VAC 50/60 Hz models available.
- 30 amp DPST motor contactor output for driving 1 1/2 (120 VAC)/3 HP (240 VAC) pumps.

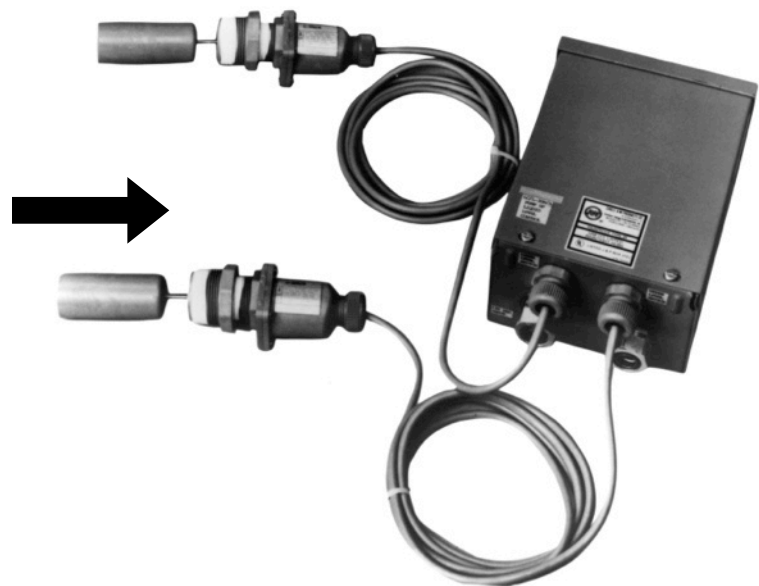
Choose from any two Harwil liquid switch models.

- Models for clean or contaminated fluids such as water, sea water, sewage, thin slurries, contaminated ground water, etc.
- Models for strong acids, bases, hydrocarbons, alcohols, inorganics, ketones, esters or ethers.
- Each system is provided with a complete, descriptive parts list and an installation and wiring diagram for both level switches and control module.
- Maintenance and check out requires only a standard multimeter.
- LC-1 Control Module is delivered pre-wired and is ready to hook-up to control your liquid level.

**UPPER AND
LOWER LEVEL
SWITCHES
COMPRISING
ANY TWO OF
THE FOLLOWING
HARWIL
MODELS:**

**L-40N
L-40VCR
L-30RV
L-30NV
L-30CRV
L-5
L-5SS
LD-5
LD-5SS
L-8R**

**L-8N
L-8CR
L-21N
L-21VCR
L-30N
L-30R
L-30CR**



Limited Warranty Page 7

Model LC-1 Module

Electronic Latching Control Module Specifications:

Operating Voltage (Input)

Voltage: 120 or 230 VAC
Tolerance: ±15%
Frequency: 50/60 Hz

Output

Electromechanical relay
Form: Single pole double throw, isolated
Rating: 10 AMPs resistive at 240 VAC

Protection

Transient Protected
Dielectric Breakdown: 1500 volts RMS minimum between input, output and probe.

Environment

Operating Temperatures: -20°C to +55°C
Storage Temperatures: -20°C to +55°C
Coating: Printed circuit board is conformal coated to resist moisture and corrosion.

Motor Contactor Specifications

Operating Coil

120 VAC or 208-240 VAC 50/60 HZ
Inrush: 31 VA
Continuous use: 7 VA
Pickup: 90 VAC (120 VAC Coil)
170 VAC (208-240 VA Coil)
Coil Insulation: Class B
Coil Connections: Double Male 1/4" quick connect
Maximum Ambient Temperature: 155°F

Output Power Contacts

Type: DPST - Normally Open
Contact rating per pole:

VOLTS (VAC)	LOCKED ROTOR AMPS (LRA)	FULL LOAD AMPS (FLR)	RESISTIVE AMPS
120/240	100	20	30

VOLTS	MAX NOMINAL MOTOR HORSE POWER
120 VAC	1.5 HP
208-240 VAC	3.0 HP

Terminal Strip - 812 Series

Electrical Rating

Rated voltage - 1600 Volts RMS
Current rating - 30 AMPS

Wire Size

Will accommodate lugs for wire sizes AWG #14 to 12

Hardware

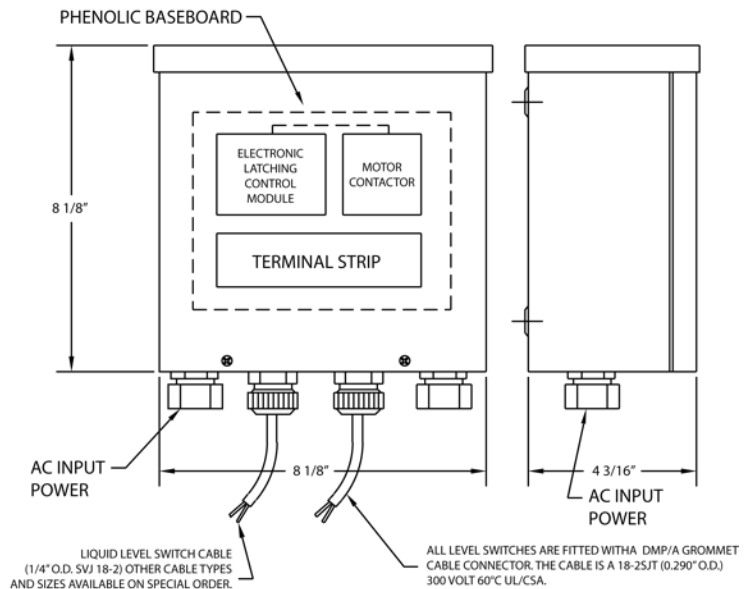
Screws and terminals - brass, nickel plated
Solder terminals - brass, hot-tinned

Molded Material

G.P. phenolic (94V-0).
UL Recognized

Control Box

Rain resistant type 3R UL listed.



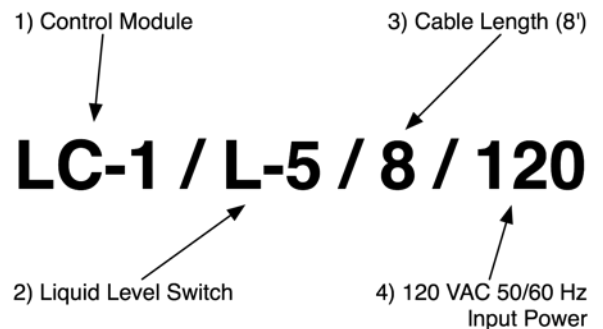
Complete operating instructions, mechanical and electrical installation drawing and a numbered parts list is supplied with each unit.

How to order:

Four items are required to order a complete control system:

1. Basic Model Number: LC-1
2. Level Switch Model Number: Choose from 15 standard models.
3. Length of cable in feet between control module and liquid level switches. Standard cable is 1/4" O.D. SVJ 18-2/90°C UL listed. Note: if customer is to supply cable, enter "O"
4. Operating Voltage.

Sample Part Numbers:



- Installation drawing and a numbered parts list is supplied with each unit.
- Current Price Information is Listed on Separate Sheet.
- Special One Day Delivery Available.