

FLUID FLOW SWITCH

Model Q-5SS

10 to 102,000+ GPM

for pipes 1"-48"+

316 STAINLESS STEEL - TEFLON® - VITON® - WETTED SURFACES



*Reliable,
Inexpensive*

For Use in Mildly Corrosive Chemicals

Generally accepted for use with 316 Stainless Steel
For instance, mildly corrosive fluids such as:

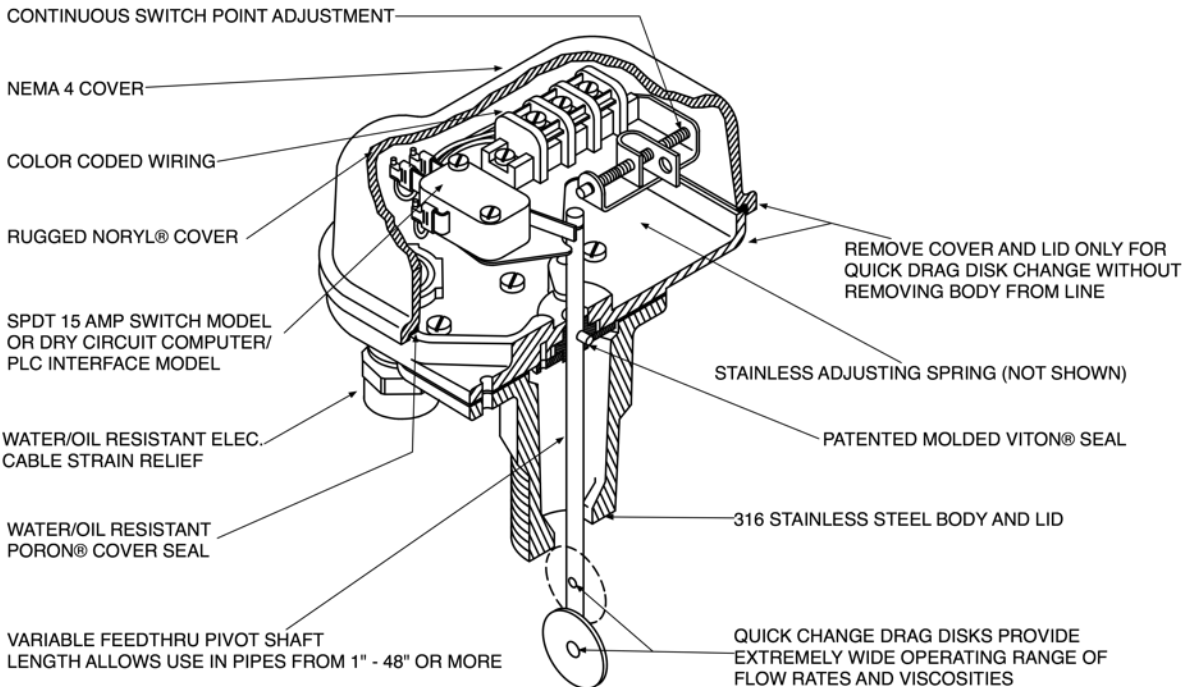
- Aluminum Sulfate
- Crude Oil
- Diluted Sulfuric Acid
- Ethyl Chloride
- Hydrochloric Acid
- Lactic Acid
- Magnesium Hydroxide
- Nickel Sulfate
- Nitric Acid
- Phenol
- Potassium Dichromate
- Zinc Sulfate

Plus

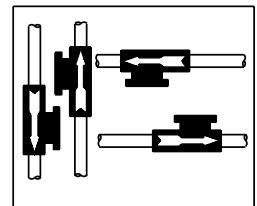
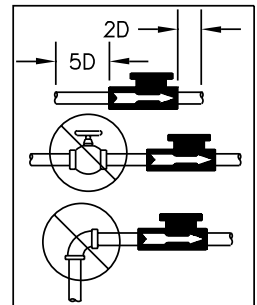
- Alcohols
- Filtered Sewage Water
- Gasoline
- Glycols
- Oils
- Pure Water
- Soap Solutions
- Tap Water

Special Features

- Wetted surfaces of 316 stainless steel, Teflon® and Viton®
- Responds to flow only, independent of pressure and temperature
- Continuously adjustable while operating
- Mount in any position
- Line pressure to 300 psig
- Temperature to 180°F continuous
- No damage or calibration change when subjected to reasonable hydraulic hammer or surge pulses
- Maintenance and checkout is a snap for your present personnel using an uncomplicated standard test meter
- Extensive Chemical Corrosive List On Page 49.



TURBULENT FLOW REDUCTION



MOUNT IN ANY POSITION



Limited Warranty Page 7

541 Kinetic Drive, Oxnard, CA 93030
Tel: (805) 988-6800 Fax: (805) 988-6804
Email: harwil@harwil.com

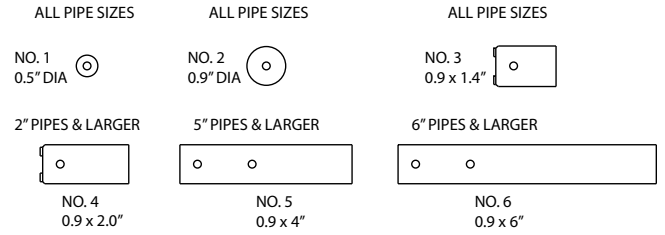
Model Selection Chart

Pipe Size NPT	Flow Limits Between Which Switch Point May Be Set GPM	Part Number			
		Model	Pivot Shaft No.	Target No.	Electric Cable 1 or 2
1	10-20	Q-5SS	2	2	---
	20-60	Q-5SS	2	1	---
1 1/2	14-42	Q-5SS	3	3	---
	20-60	Q-5SS	3	2	---
	30-90	Q-5SS	3	1	---
2	21-63	Q-5SS	3	4	---
	30-90	Q-5SS	3	2	---
	60-180	Q-5SS	3	1	---
2 1/2	36-108	Q-5SS	3	4	---
	90-150	Q-5SS	3	2	---
	90-270	Q-5SS	3	1	---
3	45-135	Q-5SS	5	4	---
	75-225	Q-5SS	5	2	---
	130-390	Q-5SS	5	1	---
3 1/2	56-168	Q-5SS	5	4	---
	85-285	Q-5SS	5	2	---
	180-540	Q-5SS	5	1	---
4	77-231	Q-5SS	5	4	---
	130-390	Q-5SS	5	2	---
	235-705	Q-5SS	5	1	---
5	84-252	Q-5SS	5	5	---
	200-600	Q-5SS	5	2	---
	350-1050	Q-5SS	5	1	---
6	103-309	Q-5SS	5	6	---
	125-375	Q-5SS	5	5	---
	300-900	Q-5SS	5	2	---
8	550-1650	Q-5SS	5	1	---
	189-567	Q-5SS	5	6	---
	232-696	Q-5SS	5	5	---
10	550-1650	Q-5SS	5	2	---
	950-2850	Q-5SS	5	1	---
	292-876	Q-5SS	5	6	---
	358-1074	Q-5SS	5	5	---
	850-2550	Q-5SS	5	2	---
	1450-4350	Q-5SS	5	1	---

LARGE PIPE SIZE INFORMATION AVAILABLE BY REQUEST.

Model Q-5SS

Target (Drag Disk/Strip) Number



Hysteresis (% Flow Change to Activate / Deactivate Switch)

≈ 10% at upper end of flow range
 ≈ 30% at lower end of flow range

Differential Pressure Drops Across Unit (Normal Operating Conditions)

1" - 3" Pipe, less than 1 psi
 4" - 48" Pipe, Negligible

Working Line Pressure

300 psig max. @ 180°F Max
 (Proof tested to 1200 psig @ room temperature)

Materials

316 Stainless steel body, Noryl® cover, 316 stainless steel hardware.

Working fluid "sees" 316 stainless, Teflon® gasket and Viton® elastomer seal.

Electrical Switch Characteristics

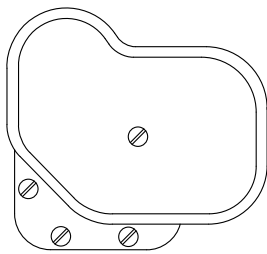
SPDT, 15 amp, 1/2 hp @ 125 or 250 VAC,
 1/2 amp @ 125 VDC, 1/4 amp @ 250 VDC,
 5 amp @ 125 VAC (tungsten lamp load)
 UL and CSA Listed
 10,000,000 Operations Median

Model Q-5SS can also be fitted with a SPDT Gold Cross Bar Switch for computer/PLC interface.

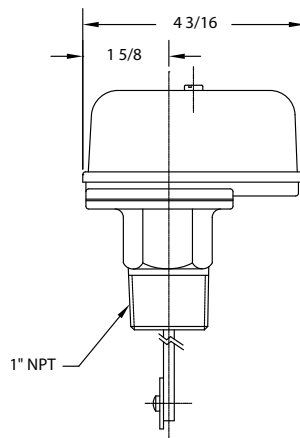
Weight: 3.5 lb.

Installation Dimensions

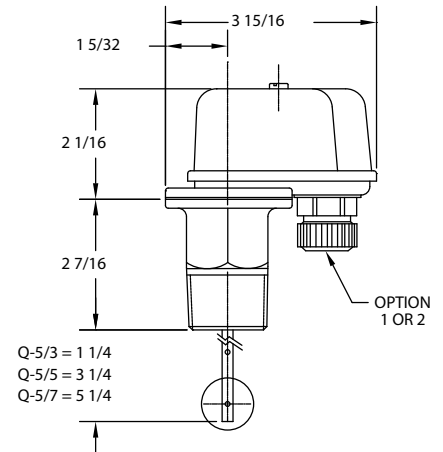
PLAN VIEW



SIDE VIEW



FRONT VIEW



Input Power Cable Interface Options

Option No. 1

Basic Model #

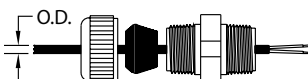
Sample Part #

Grommet Size pg. 9

Q - 5SS / 3 / 2 / B

Drag Disk Feedthru Shaft Length

Drag Disk Size



Option No. 2

Basic Model #

Sample Part #

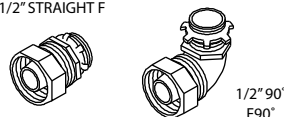
1/2" Flexible Conduit Fitting

Q - 5SS / 3 / 2 / F

Drag Disk Feedthru Shaft Length

Drag Disk Size

1/2" STRAIGHT F



See grommet size chart on page 9.

- Installation drawing and a numbered parts list is supplied with each unit.
- Current Price Information is Listed on Separate Sheet.
- Special One Day Delivery Available.